

January Newsletter

Society of Supply Chain Operations Excellence

"Engaging Students beyond the Classroom by Promoting Professional Involvement and Networking"

Current News

Logistics Collaboration: An Olympic Effort

- From *SupplyChain 24/7*



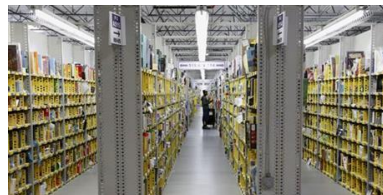
Samsung: Uneasy in the Lead

- From *The New York Times*



Online Shopping Grows, With Some Growing Pains

- From *The AP*



The Right Network Can Make or Break Your Project

- From *Harvard Business Review*



Productivity and Machinery: The State of Manufacturing Workers

- From *Supply Chain Management Review*



In Affiliation With:



*Mid-Carolina
Chapter*

Quote of the Month

"I was obliged to be industrious. Whoever is equally industrious will succeed equally well."

Johann Sebastian Bach
German Composer

Supply Chain Video



The products we use everyday come to us in all different types of packaging. The manufacturers of these goods do not always want to invest in all of the different equipment needed to make the wide variety of packaging for their products, so they hire someone else to do it for them. In this segment, we head to Athens, Georgia to see how one facility packages crackers, cookies, macaroni and more in many different ways.

[VIEW HERE](#)

move it!

Current Opportunities on JobMate



UPCOMING EVENTS

HAPPY NEW YEAR!



Saturday, January 4

APICS CPIM Class

Basics of Supply Chain Management

Moore School of Business, 8:00AM

Register [HERE](#)

Wednesday, January 8

APICS PDM

The 7 Deadly Sins of Forecasting

Location: TBD, 6:00PM

Register [HERE](#)

**FIND
US
ON**



Facebook



Twitter



LinkedIn

Saturday, February 1

APICS CPIM Class

Master Planning of Resources

Moore School of Business, 8:00AM

Register [HERE](#)

Wednesday, February 12

APICS Plant Tour

Conquest Brewery

Register [HERE](#)

Be sure to check your email for more events including meetings, speakers, company tours, and workshops.

If you have any ideas for SCOPE please email us at

soscope@mailbox.sc.edu